



# MDM™ FIRST RESPONDER™

The MDM First Responder is a complete snow-fighting package with a choice of plow, dump body and spreader.

With a choice of straight blade or V-plow options, Hero Snow Plows lead the way in snow control. Available with halogen or LED lighting.

Built specifically for the Class 4 and 5 chassis, Henderson MDM First Responder Dump Bodies can handle any medium-duty hauling task. Configure yours with a 9' or 11' dump body lengths, 12" or 16" side heights, mild sides and floor, and fixed or fold-down sides.

Complete the package with our TGS tailgate spreader. Stainless steel cabinet and protected electric spinner are operated by in-cab controls.



## MDM DUMP BODIES



- Fixed or Fold-Down Sides**
- Mild steel painted body
  - 9' or 11' lengths
  - 12" or 16" side heights
  - Concealed hinges
  - Tailgate hinges top & bottom
  - Use any cab shield below



## TAILGATE SPREADERS

**TGS undertailgate spreader:** 12" or 16" side heights, 201 stainless steel hopper and 6" electric auger.

**RTS replacement tailgate spreader:** 12" or 16" side heights, 201 stainless steel hopper and 6" electric auger. Available in 2022.

## HERO SNOW PLOWS



- 9' painted straight blade with Full-Trip or Trip-Edge
- 10' painted straight blade with Trip-Edge

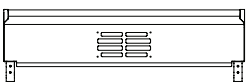


- 10' Heavy-Duty painted straight blade with full-trip



- 9.5' or 10.5' stainless steel V-plow with trip-edges

## Bolt-On Cab Shield Options



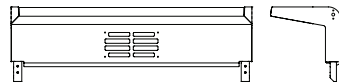
### Standard-Height Quarter Cab Shield

- Straight type
- Mild steel
- 95.6" wide
- 14.9" overhang / 17" clearance
- 21" x 9.6" window area
- 139 lbs.



### Standard-Height Half Cab Shield

- Straight type
- Mild steel
- 95.6" wide
- 21.8" overhang / 18" clearance
- 21" x 9.6" window area
- 159 lbs.



### Mid-Height Quarter Cab Shield

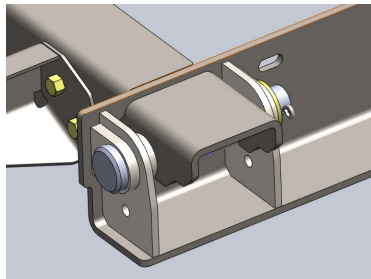
- Straight type
- Mild steel
- 95.6" wide
- 14.3" overhang / 20.6-23" clearance
- 21" x 9.6" window area
- 161 lbs.



### Tall-Height Quarter Cab Shield

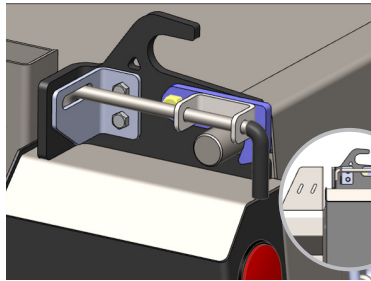
- Straight type
- Mild steel
- 95.6" wide
- 14.3" overhang / 24.6-27" clearance
- 21" x 9.6" window area
- 176 lbs.





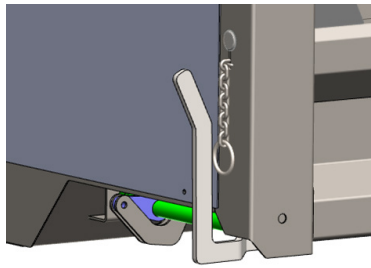
**Rear Hinge**  
 All plates are .250" except for .375" doublers on outside of clevis.  
 Pin is 1" OD zinc plated w/cotter pin.

*Top rails are welded on*

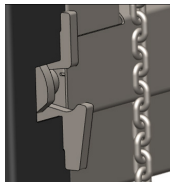


**Upper Tailgate Latch**

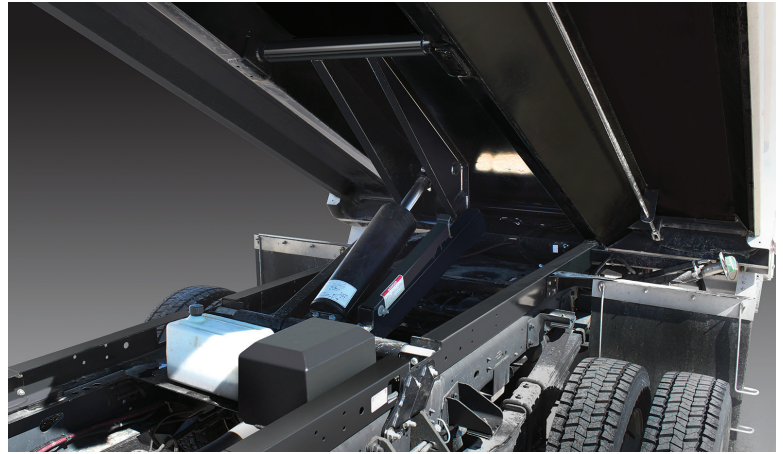
- Ergonomic design maximizes leverage to pull tailgate closed
- Improved serviceability
- 2-point latching system allows for closed tailgate structure (no rust)



**Tailgate Release Handle**



**Toe-Saver Bracket**

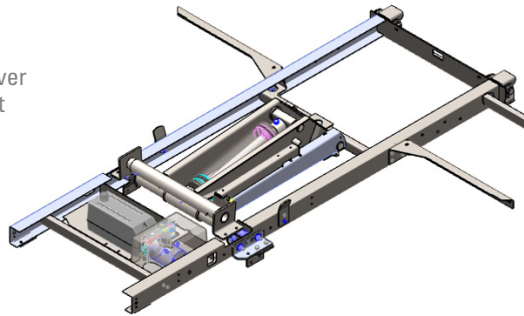


**Cross-memberless Understructure**

- Longsills: 7-ga. trapezoidal longsills
- Enclosed trapezoidal longsills (10-ga. steel)
- Easy to clean & no salt pockets
- Light weight design

**Scissor Lift and Sub-Frame**

- Redesigned to eliminate welded joints
- Mounting brackets: sub-frame to chassis
- Mud flaps and filler/DEF brackets



*New ergonomic hand-held control*

## GR50 Mild Steel Bodies

LENGTH	SIDE HEIGHT	SIDE STYLE	SIDES: WALL CONFIGURATION	FLOOR OPTIONS	HEADSHEET	DOUBLE-WALL TAILGATE	REAR OPENING WIDTH	MINIMUM CAPACITY	APPROX. WEIGHT
9'	12"	FIXED	12-GA. DOUBLE WALL	10- or 7-GA. GR50	12-GA. GR50	10-GA.INSIDE/12-GA. OUTSIDE	85.7"	2.5 CU. YDS.	1256 LBS.
9'	16"	FIXED	12-GA. DOUBLE WALL	10- or 7-GA. GR50	12-GA. GR50	10-GA.INSIDE/12-GA. OUTSIDE	85.7"	3.2 CU. YDS.	1305 LBS.
9'	12"	FOLD-DOWN	12-GA. SINGLE WALL	10- or 7-GA. GR50	12-GA. GR50	10-GA.INSIDE/12-GA. OUTSIDE	85.7"	2.5 CU. YDS.	1226 LBS.
9'	16"	FOLD-DOWN	12-GA. SINGLE WALL	10- or 7-GA. GR50	12-GA. GR50	10-GA.INSIDE/12-GA. OUTSIDE	85.7"	3.2 CU. YDS.	1256 LBS.
11'	12"	FIXED	12-GA. DOUBLE WALL	10- or 7-GA. GR50	12-GA. GR50	10-GA.INSIDE/12-GA. OUTSIDE	85.7"	3.0 CU. YDS.	1478 LBS.
11'	16"	FIXED	12-GA. DOUBLE WALL	10- or 7-GA. GR50	12-GA. GR50	10-GA.INSIDE/12-GA. OUTSIDE	85.7"	4.0 CU. YDS.	1542 LBS.
11'	12"	FOLD-DOWN	12-GA. SINGLE WALL	10- or 7-GA. GR50	12-GA. GR50	10-GA.INSIDE/12-GA. OUTSIDE	85.7"	3.0 CU. YDS.	1433 LBS.
11'	16"	FOLD-DOWN	12-GA. SINGLE WALL	10- or 7-GA. GR50	12-GA. GR50	10-GA.INSIDE/12-GA. OUTSIDE	85.7"	4.0 CU. YDS.	1470 LBS.

### COMPLETE MUNICIPAL SNOW & ICE CONTROL SOLUTIONS

PLOWS ▪ WINGS ▪ UNDERBODY SCRAPERS ▪ SAND & SALT SPREADERS ▪ STANDARD & PRECISION SPINNERS ▪ DUMP BODIES ▪ COMBINATION (MUNICIPAL) BODIES  
 BRINE PRODUCTION & MANAGEMENT SYSTEMS ▪ ANTI-ICE SYSTEMS ▪ PRE-WET SYSTEMS ▪ SLURRY SYSTEMS ▪ COMPLETE TURNKEY PACKAGES



© Henderson Products, Inc., A division of Douglas Dynamics, L.L.C., reserves the right in pursuit of continuous product improvement to change specifications used herein. As a *custom manufacturer* of truck bodies, truck equipment and brine systems, additional product options may be available that are not shown here.



1085 S. Third Street, Manchester, IA 52057  
 Toll Free: (800) 359-4970  
[www.HendersonProducts.com](http://www.HendersonProducts.com)



HP-060 11/23